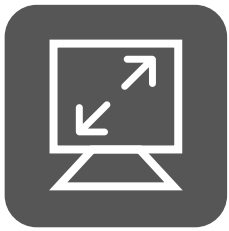


ERO-OPK-OTDR-620PON

OTDR PARA RED TRONCAL Y FTTX



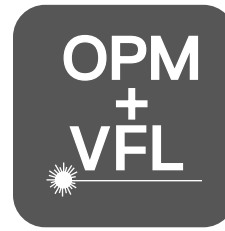
Pantalla Touch
7"



Zona Muerta
0.5m



40 dB
Rango Dinamico



OPM & VFL & LS
Integrados



Sistema Event Map
para OTDR y PON

Diversos conectores en una plataforma



ST (Optional)



FC



SC (Optional)



LC (Optional)

Design is subject to change without any notice for the improvement purpose

Sistema Inteligente para detección de Eventos

Event MAP



Función del sistema que permite a través de un análisis inteligente la de detección de eventos de manera grafica con alta precisión al momento de hacer el chequeo de la medición en base de un sistema de pulsos que permiten realizar la interpretación de cualquier comportamiento o evento que tenga el enlace de Fibra Óptica, como puede ser un empalme, doblez, divisor óptico, el valor de atenuación por Km, etc.

Wavelength	Length(km)	Total RL(dB)	No.	Pass/Fail
1310nm	49.72506	31.2319	5	Pass
1550nm	49.72108	33.1725	4	

No.	Type	Length(km)	Event loss(dB)	Reflex(dB)	Slope(dB/km)	Total RL(dB)
0		0.00000	0.00000	0.00000	0.00000	0.00000
1		14.94981	1.45371	-23.51069	0.17819	4.11507
2		29.98129	-0.02392	-34.29751	0.18502	6.87189

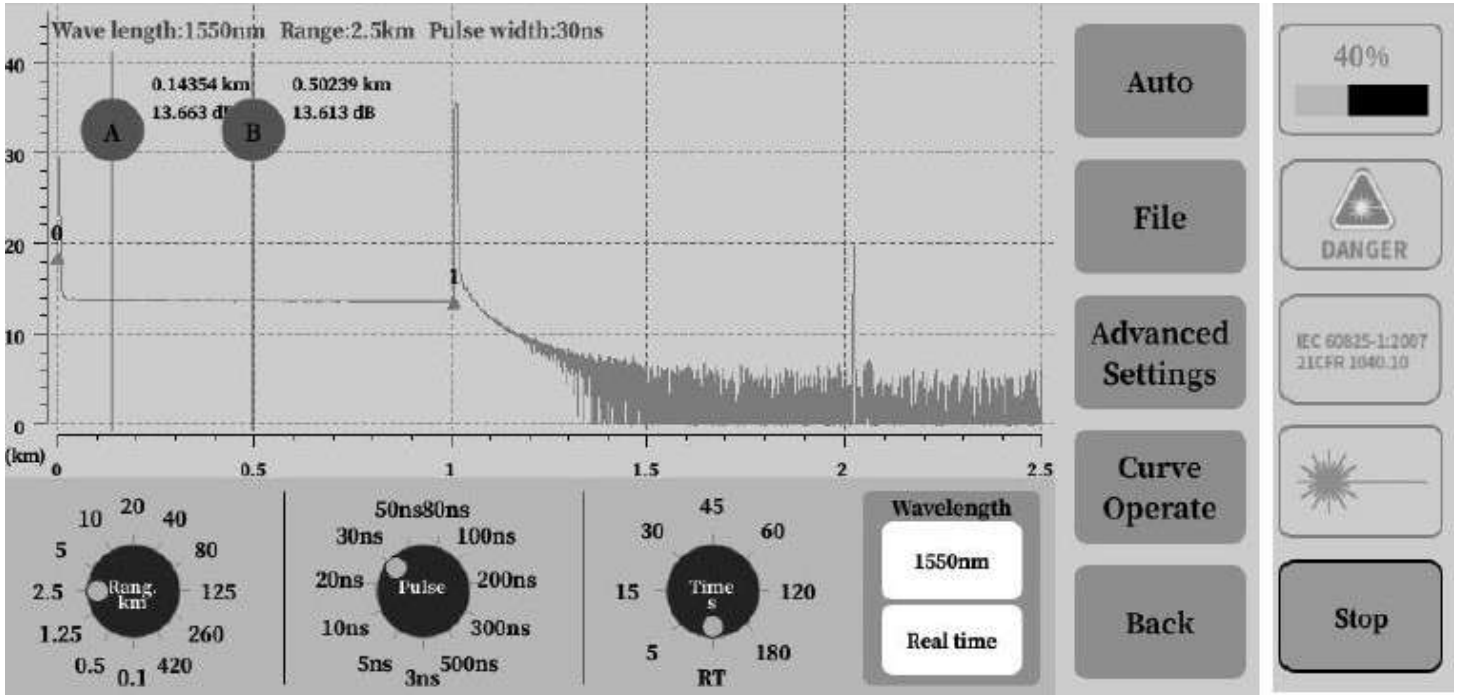


Detección Automatica de Divisores Ópticos

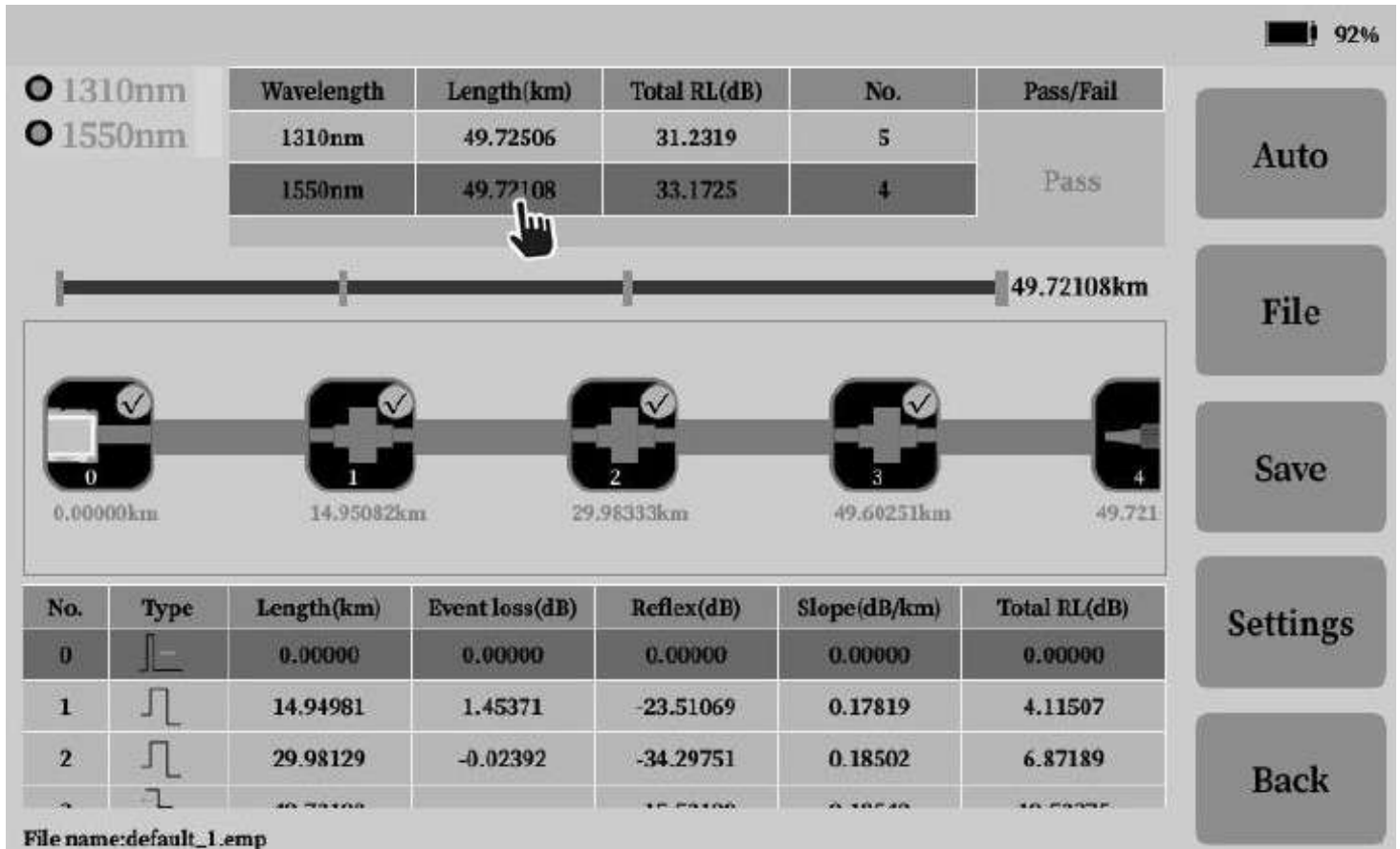
Nivel Maximo de Divición 1:64



Modo de OTDR



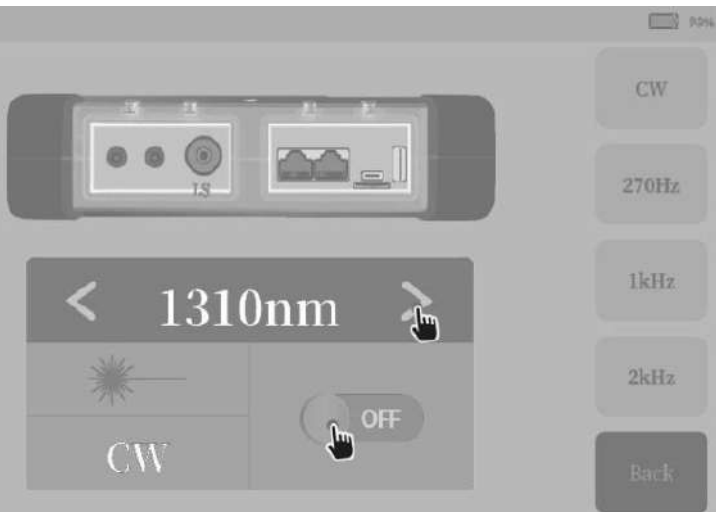
Modo de Event Map



Design is subject to change without any notice for the improvement purpose

Enabling to day
Inspiring Tomorrow

Funciones Extras



Modo de Fuente de Luz



Modo de Medidor de Potencia



Modo de Medidor de Perdida de Inserción

Información Técnica

ERO-OPK-620PON



ERO-OPK-62PON-PT1		ERO-OPK-62PON-PT2		ERO-OPK-62PON-PT3	
Wavelength	1310nm/1550nm±20nm 1625nm±15nm (Filtered)				
Filter	High pass>1595nm Isolation>40dB (1270nm~1585nm)				
Fiber Type	G652 & G657				
Max Dynamic Range	38/36/36dB	40/38/38dB		42/40/40dB	
Event Blind Zone	0.5m				
ATT Blind Zone	3.5m				
PON Blind Zone	30m				
Test Range	100m/500m/1.25km/2.5km/5km/10km/20km/40km/80km/125km/260km/420km				
Pulse Width	3ns/5ns/10ns/20ns/30ns/50ns/80ns/100ns/200ns/300ns/500ns/800ns/1us/2us/3us/5us/8us/10us/20us				
Ranging accuracy	± (0.75m+ Sample interval+0.0025% × Test distance)				
Loss accuracy	± 0.03dB/dB				
Sample Points	≥ 256k				
Sample Resolution	0.015m~16m				
Reflection Accuracy	± 2dB				
Loss Resolution	± 0.001dB				
Loss Threshold	0.01dB				
File Format	SOR Standard File Format				
Loss Analysis	4-point method /5-point method				
Laser Safety Level	Class II				
Refresh Rate	4 Hz (Typ.)				
Data Storage	Internal storage: 2GB, 200,000curves; External storage:64GB				
Connector	FC/UPC (Interchangeable SC、ST)				
Data Interface	USB-A, Type-C port, RJ45 LAN 10/100Mbit/s				
OPM					
Wavelength range	800nm~1700nm				
Connector	Universal FC/SC/ST				
Test scope	-50dBm~+26dBm/-70dBm~+6dBm				
Uncertainty	± 5%				
Calibration wavelength	850nm/980nm/1300nm/1310nm/1490nm/1550nm/1625nm/1650nm				
LS					
Laser Type	FP-LD				
Wavelength	Consistent with OTDR output wavelength				
Output power	≥ -5dBm(SM fiber)				
Mode	CW/270Hz/1kHz/2kHz				
Stability	CW, ± 0.5dB/15min (Test after 15 minutes of preheating)				
Connector	FC/UPC (Interchangeable SC、ST)				
VFL					
Wavelength	650nm ± 20nm				
output power	≥ 10mW				
Mode	CW/1Hz/2Hz				
Connector	FC/UPC (Interchangeable SC、ST)				
The Optical Loss Test index refers to the above light source and optical power meter index.					
Others					
Display	7 inch color LCD + touch screen Resolution:800×480				
Power supply	Type-C adapter: Input: 100V~240V , 50/60Hz ,Output:5V/3A,9V/2A,12V/1.5A Lithium battery : 3.7V, 10400mAh				
working mperature	-10°C~+50°C				
Storage temperature	-40°C~+70°C				
relative humidity	0~95%, Non Condensing				
Weight	≤ 1.2kg				
Size	215mm×160mm×50mm				
Functions of Host: OTDR/VFL/LS/OPM/Event Map/End Detection/Optical Loss Test/Ethernet test/Remote test/File management					

Configuration list

NO.	Name	Quantity	Remarks
1	Host	1	
2	AC/DC power adapter	1	
3	U disk (containing analysis software/ User' s Manual)	1	
4	Data line	1	
5	OTDR SC adapter	1	
6	OPM SC adapter	1	

NO.	Name	Quantity	Remarks
7	User' s Manual	1	
8	Calibration certification	1	
9	Certificate/ Warranty card	1	
10	Clean cotton piece	10	
11	Leather knob	1	
12	Special backpack for instrument	1	

Design is subject to change without any notice for the improvement purpose

Enabling to day
Inspiring Tomorrow