

GP3600 Series

High-density Pizza-box GPON OLT

Product Overview

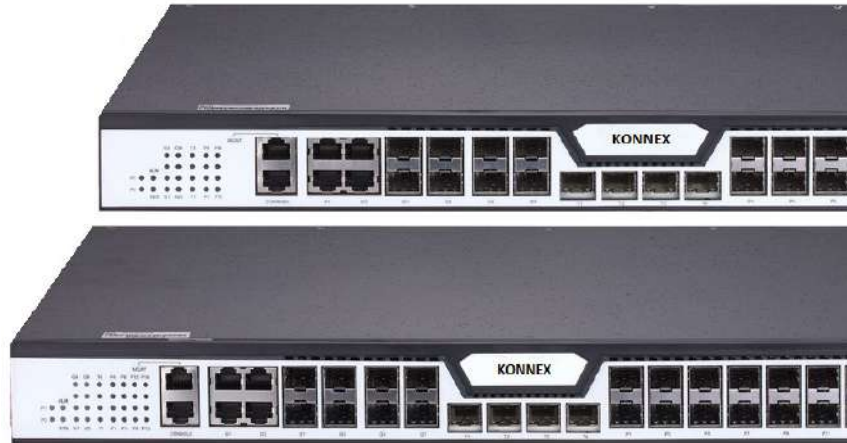
GP3600 Series complies with ITU-T G.984/G.988 and meets requirements about GPON OLT in Network Access Technical Requirements. It fully supports CTC2.0, automatic discovery and cooperation with ONUs of different manufacturers.

GP3600 Series supports the Asymmetric uplink 1.25Gbps/downlink 2.5Gbps PON transmission rate, efficient bandwidth usage and Ethernet services, helping carriers to provide reliable services to their users.

Its coupling ratio ups to 1:128, and its support of different hybrid ONU networks minimizes the carrier's investment.

GP3600 Series supports routing functions such as RIP, OSPF and BGP.

GP3600 Series, based on the edge-cutting technologies, is strong in functions and QoS guarantee, SLA and DBA can be easily listed out.



Product Characteristics

GPON: Abiding by ITU-T G.984/G.988, GP3600 Series OLT meets relevant requirements of GPON OLT regulated in Network Access Technical Requirements and Telecom GPON Technical Requirements CTC2.0;

System capacity: GP3600 Series supports 8/16 GPON ports.

Uplink interface: GP3600 Series is equipped with 4 GE SFP ports, 4 GE combo ports and 4 10GE SFP+ ports.

Dimensions: 1U, occupies a small space.

Environmental protection: low power consumption and low operating cost.

Bus optical fiber protection: the link can be automatically switched when trouble occurs in the optical fiber;

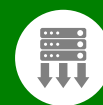
Power supply: supports dual-AC, dual-DC and AC/DC power supply. The power supply supports modularized design, hot-swap and EMC-3 standard. It well adapts to the environment.



Support 1.25Gbps uplink and 2.5Gbps downlink bandwidth



Efficient bandwidth usage and Ethernet services



The Splitting ratio ups to 1:128

Model Lists

ERO-KO-GP3600-08

High-density Pizza-box GPON OLT



- 1 console port
- 8 fixed PON ports
- 4 10GE SFP+ ports
- 1 out-band 10/100M port
- 4 GE SFP ports
- 4 GE TX/SFP combo ports

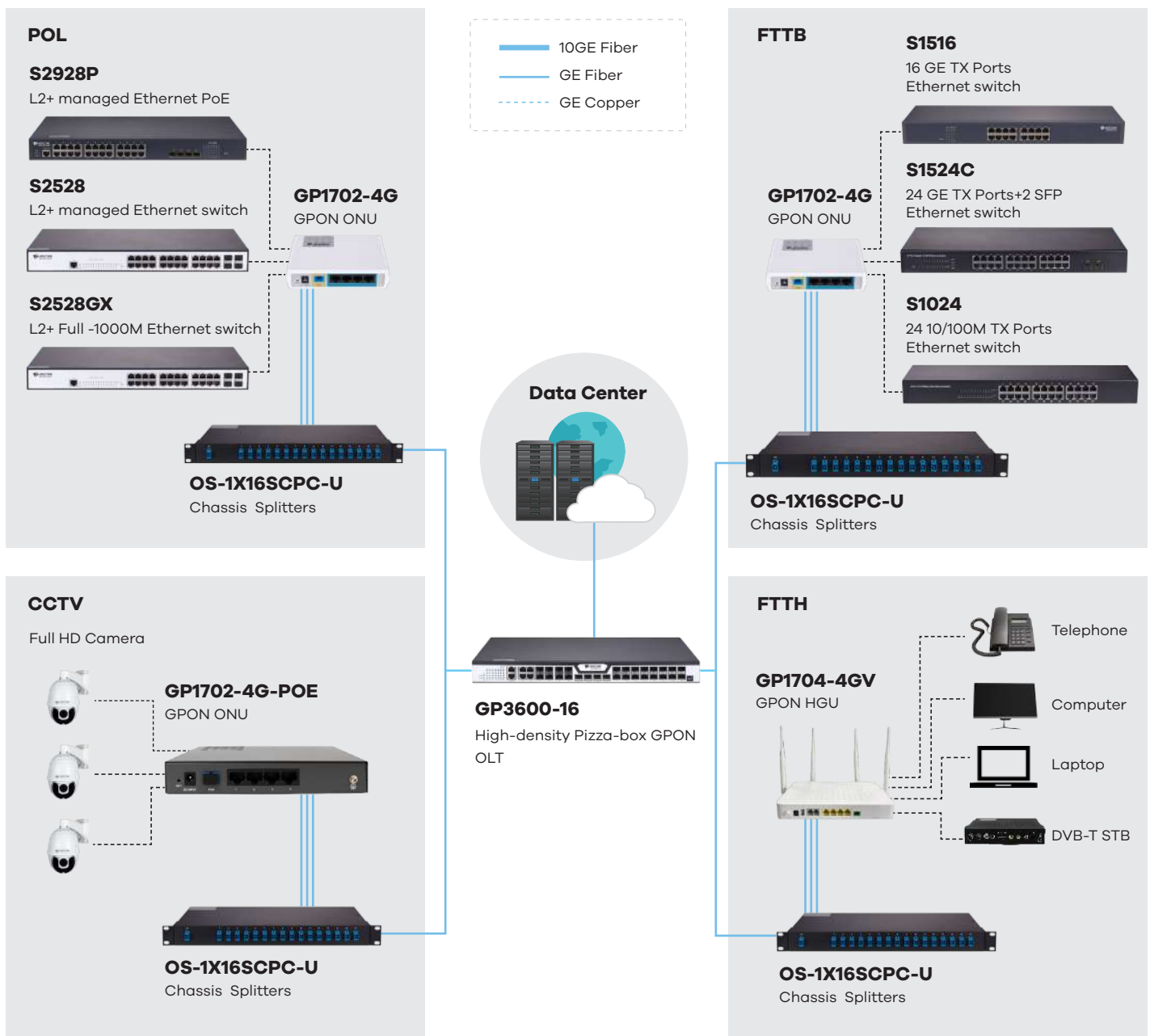
ERO-KO-GP3600-16

High-density Pizza-box GPON OLT



- 1 console port
- 16 fixed PON ports
- 4 10GE SFP+ ports
- 1 out-band 10/100M port
- 4 GE SFP ports
- 4 GE TX/SFP combo ports

Application Diagram



contacto@erobrer.com.mx
www.erobrer.com.mx

Conectando las redes del mañana.



System Performance

Item	ERO-GP3600-08	ERO-GP3600-16
Service interface		
PON ports	8	16
GE uplink	4 100/1000M SFP + 4 GE SFP/TX	4 100/1000M SFP + 4 GE SFP/TX
10GE uplink	4 10GE/GE SFP+	4 10GE/GE SFP+
Supported GPON SFP module	Class B+, Class C+, Class C++	Class B+, Class C+, Class C++
Management interface		
RJ45 console	1	1
Mini-USB console	1	1
Out-of-Band	1	1
System capacity		
DRAM (MB)	512	512
Flash (MB)	32	32
Backplane (Gbps)	126	156
MAC table	64K	64K
Buffer size (MB)	2	2
Jumbo frame (KB)	2	2
IPv4 routing table	32K	32K
IPv6 routing table	8K	8K
Active VLAN	4,094	4,094
SVI number	400	400
Forwarding mode	Store-and-forward	Store-and-forward

Technical Specifications

Standards

- ITU-T G.984/G.988
- IEEE 802.11D, Spanning Tree
- IEEE 802.1Q, VLAN
- IEEE 802.1w, RSTP
- IEEE 802.3ad physical link static/dynamic aggregation (LACP), Ethernet - II

VLAN

- Port/IP/Protocol/MAC-based VLAN
- 4K VLAN
- QinQ and flexible QinQ

Multicast

- L2 multicast
- IGMP snooping
- MLD snooping
- Fast-leave

Layer 3 Function

- Static route
- RIPV1/v2
- OSPF
- BGP

QoS

- Backpressure flow control (half duplex)
- IEEE 802.3x flow control (full duplex)
- IEEE 802.1p, CoS
- WRR, SP and FIFO queue schedule
- Limiting the uplink/downlink rate based on each ONU
- DBA and SLA

Reliability

- Unidirectional Link Detection (UDLD)
- Hot swap of the EPON optical module
- Optical path protection of EPON (type B/C, hand-in-hand)
- Abnormal luminescence ONU detection such as long luminescence
- IEEE 802.3ad LACP

DHCP Function

- Server/Relay/Client
- DHCP snooping
- DHCP option 66,67,82
- DAI
- IP source guard

Network Security

- L2~4 ACL
- Flow-based ACL
- MAC limitation
- MAC sticky
- Port isolation
- Packet storm control
- Transmission data encryption on the PON interface
- Anti attack for DDOS, TCP-SYN-flood, UDP-flood, ARP-flood, etc.

Management

- Various management modes such as CLI, Telnet, SSH, HTTP, SSL and SNMP
- ISSU
- FTP/TFTP
- SPAN/RSPAN
- NTP

Network Availability

- STP/RSTP/MSTP
- BPDU guard
- EAPS

Physical Characteristics

Item	ERO-KO-GP3600-08	ERO-KO-GP3600-16	
Power supply			
AC (V)	90 ~ 264	90 ~ 264	
DC (V)			
Power slots	2	2	
Max. consumption (W)	60	70	
Total output BTU (note: 1000 BTU/hr = 293W)	204.8	238.9	
Cooling system			
Fan number	3	3	
Air-flow	Left-right	Left-right	
Noise@25°C(dBA)	< 45	< 45	
Appearance			
Chassis	Dimensions(WxDxH mm)	442.5 x 304 x 44	442.5 x 304 x 44
	Weight (Kg)(empty)	5.5	5.6
Package	Dimensions(WxDxH mm)	576 x 448 x 94	576 x 448 x 94
	Weight (Kg)	6.4	6.5
Environmental specifications			
Operating	Temperature	0~45°C	0~45°C
	Humidity (non-condensing)	10%~85%	10%~85%
Storage	Temperature	-40°C~80°C	-40°C~80°C
	Humidity (non-condensing)	5%~95%	5%~95%
Accessories			
Parts	Power cord, rackmount kits, console cable	Power cord, rackmount kits, console cable	
Reliability			
MTBF (Hr)	95,000	90,000	
Certification	CE, FCC, ROHS	CE, FCC, ROHS	

Ordering Information

Model	Description
ERO-KO-GP3600-08	GPON OLT with 8 PON ports (1 console port, 1 out-band 10/100M port, 8 fixed PON ports (excluding the OLT SFP module), 4 GE SFP ports, 4 GE TX/SFP combo ports, 4 10GE SFP+ ports; standard AC90~264V single power supply, expandible to dual power supply, 19-inch rack-mounted installation)
ERO-KO-GP3600-16	GPON OLT with 16 PON ports (1 console port, 1 out-band 10/100M port, 16 fixed PON ports (excluding the OLT SFP module), 4 GE SFP ports, 4 GE TX/SFP combo ports, 4 10GE SFP+ ports; standard AC90~240V single power supply, expandible to dual power supply, 19-inch rack-mounted installation)
ERO-KO-PWR-150-AC	OLT AC power supply (input voltage AC90~240V, 150W max power)
ERO-KO-OLT-GSFP-C+	OLT SFP module, Class C+ standard, downlink 2.5G/uplink 1.25G, TX wavelength 1490nm, RX wavelength 1310nm, SC interface
ERO-KO-OLT-GSFP-C++	OLT SFP module, Class C++ standard, downlink 2.5G/uplink 1.25G, TX wavelength 1490nm, RX wavelength 1310nm, SC interface

This document is Public Information. EROBERER reserves the right to alter, update and otherwise change the information contained in the document from time to time.

