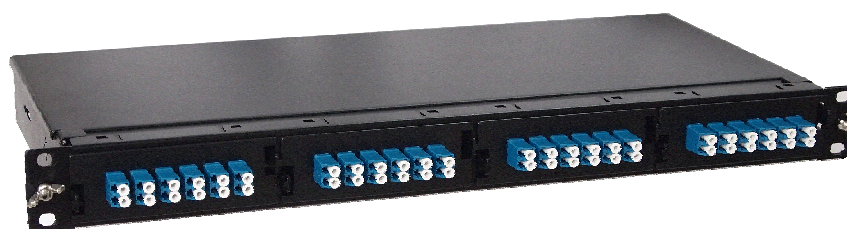


DS CODE:  
3100

## LS Simple™ Fast-Net™ Solution

### Fiber Pre-terminated Solution (MPO/MTP solution)

**- MPO/MTP Modular 1U Empty Panel (4 Cassette in 1RU, Fixed)**



LS-FDF-MC1U-EP4M-O + 4 pcs LS-MCM-LC-DP-12-SM

#### ➤ Description

- Fiber distribution closure installed for MPO/MTP cassette modules and adaptor panels
- Included the metallic case, cable protective guide, cable management and others
- Installed on the international standard (ETSI 19") equipment rack or cabinet rack

#### ➤ Specification

- Dimension : 482.6 x 223.4 x 44 (mm)
- Capacity up to max. LC 144-core
- 4 spaces for MPO/MTP cassette or MPO/MTP adaptor panel
- Poly-carbonate (PC) material for front cable management
- 19" Rack mountable 1RU
- Operating temperature : 0 °C ~70 °C

#### ➤ Application

- Telecommunication Network & Data Center Systems
- IEEE 802.3ba
- LAN & WAN
- 100BASE-FX, 10GBASE-LX4, 10GBASE-ER/EW, 40GBASE-LR4, 100GBASE-ER4 etc.

#### ➤ Part Number

Part Number	Description
LS-FDF-MC1U-EP4M-O	Fiber Distribution Frame, 1RU, Empty Closure Body, 4 entry holes for MCM cassette or adaptor panel, Fixed type (LS-FDF-1U-EP-O + LS-FDP-BK-4M)

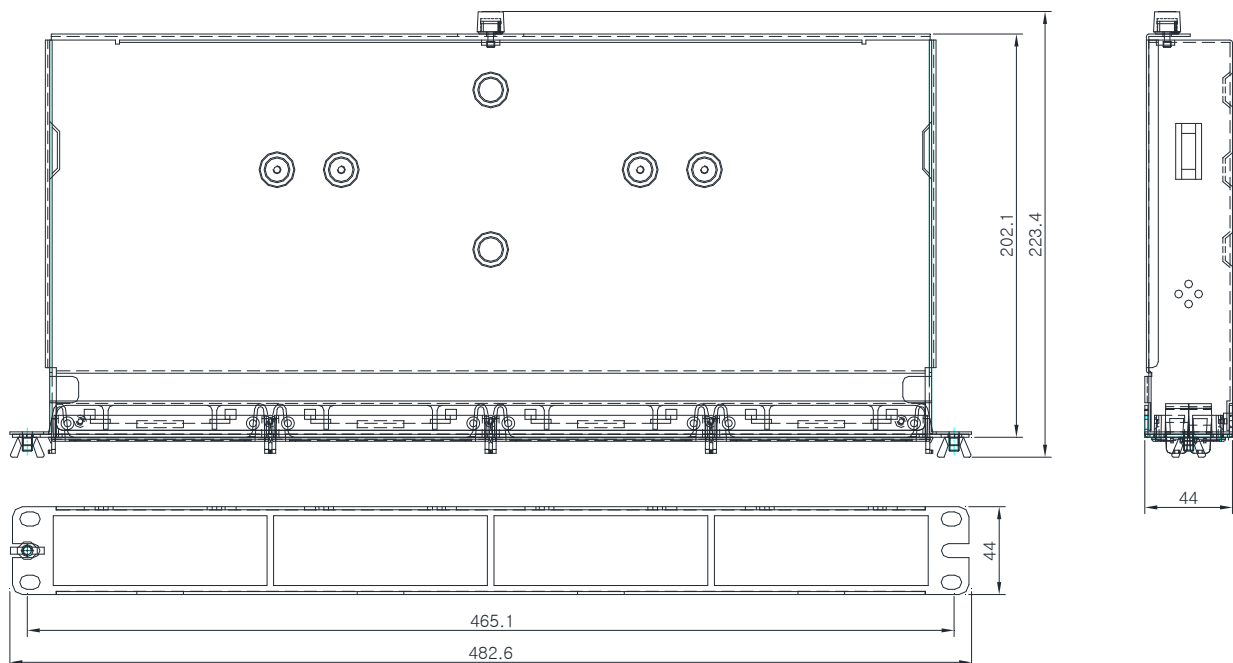
DS CODE:  
3100

## LS Simple™ Fast-Net™ Solution

### Fiber Pre-terminated Solution (MPO/MTP solution)

- MPO/MTP Modular 1U Empty Panel (4 Cassette in 1RU, Fixed)

➤ Drawing

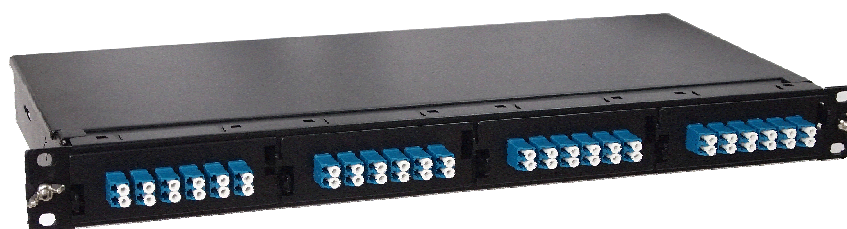


DS CODE:  
3100

## LS Simple™ Fast-Net™ Solution

### Fiber Pre-terminated Solution (MPO/MTP solution)

**- MPO/MTP Modular 1U Empty Panel (4 Cassette in 1RU, Drawer)**



LS-FDF-MC1U-EP4M-D + 4 pcs LS-MCM-LC-DP-12-SM

#### ➤ Description

- Fiber distribution closure installed for MPO/MTP cassette modules and adaptor panels
- Included the metallic case, cable protective guide, cable management and others
- Installed on the international standard (ETSI 19") equipment rack or cabinet rack

#### ➤ Specification

- Dimension : 482.6 x 247 x 43.6 (mm)
- Capacity up to max. LC 144-core
- 4 spaces for MPO/MTP cassette or MPO/MTP adaptor panel
- Sliding drawer with cable guide parts (Inside)
- Poly-carbonate (PC) material for front cable management
- 19" Rack mountable 1RU
- Operating temperature : 0 °C ~70 °C

#### ➤ Application

- Telecommunication Network & Data Center Systems
- IEEE 802.3ba
- LAN & WAN
- 100BASE-FX, 10GBASE-LX4, 10GBASE-ER/EW, 40GBASE-LR4, 100GBASE-ER4 etc.

#### ➤ Part Number

Part Number	Description
LS-FDF-MC1U-EP4M-D	Fiber Distribution Frame, 1RU, Empty Closure Body, 4 entry holes for MCM cassette or adaptor panel, Drawer type

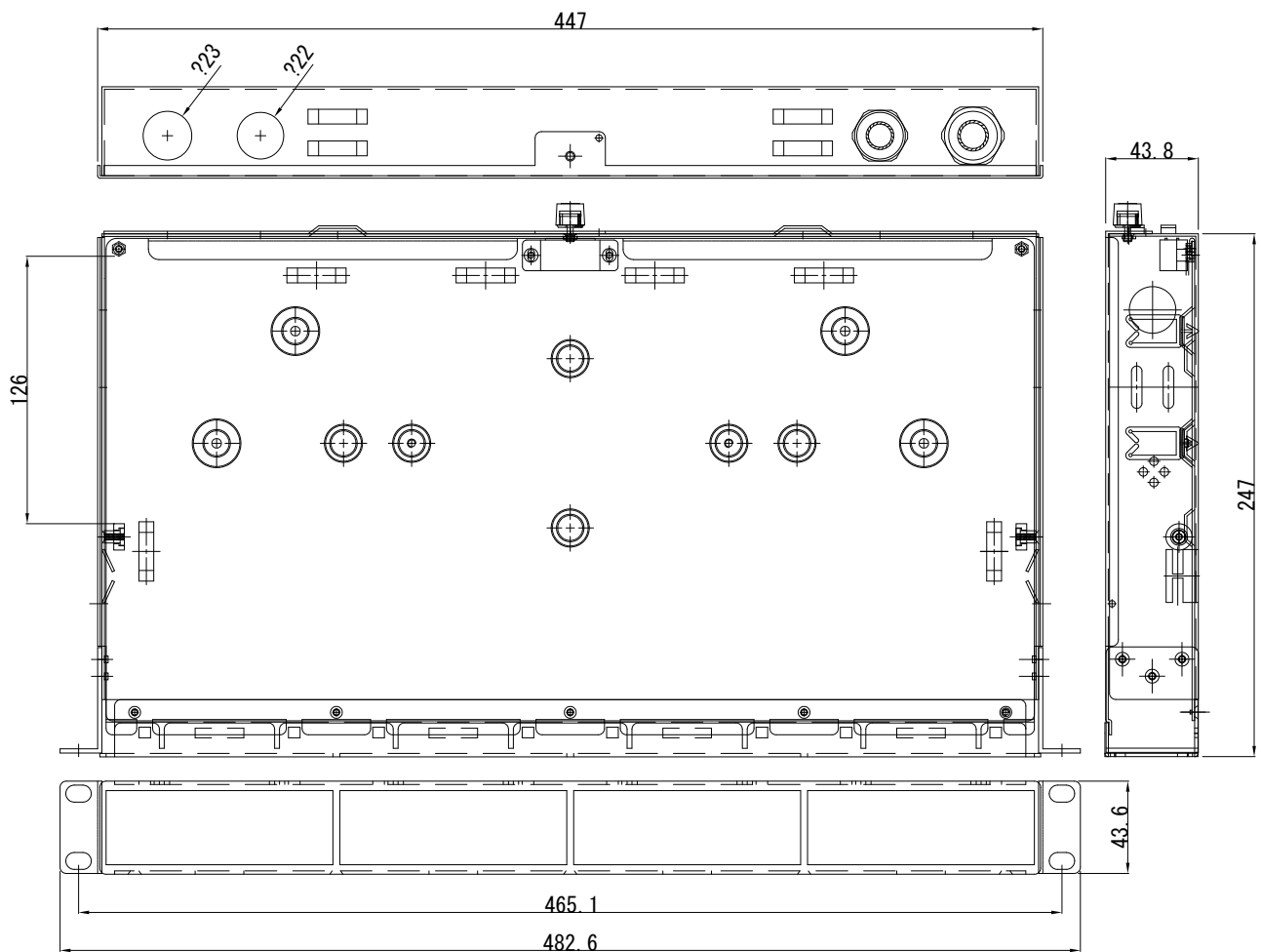
DS CODE:  
3100

# LS Simple™ Fast-Net™ Solution

## Fiber Pre-terminated Solution (MPO/MTP solution)

- MPO/MTP Modular 1U Empty Panel (4 Cassette in 1RU, Drawer)

➤ Drawing

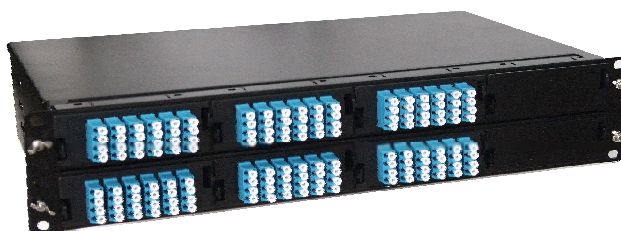


DS CODE:  
3100

## LS Simple™ Fast-Net™ Solution

### Fiber Pre-terminated Solution (MPO/MTP solution)

**- MPO/MTP Modular 2U Empty Panel (8 Cassette in 2RU, Fixed)**



LS-FDF-MC2U-EP8M-O + 6 pcs LS-MCM-LC-4M-24-SM  
2 pcs Blank Adaptor Panel

#### ➤ Description

- Fiber distribution closure installed for MPO/MTP cassette modules and adaptor panels
- Included the metallic case, cable protective guide, cable management and others
- Installed on the international standard (ETSI 19") equipment rack or cabinet rack

#### ➤ Specification

- Dimension : 482.6 x 271.8 x 88.1 (mm)
- Capacity up to max. LC 288-core
- 8 spaces for MPO/MTP cassette or MPO/MTP adaptor panel
- 19" Rack mountable 2RU
- Operating temperature : 0 °C ~70 °C

#### ➤ Application

- Telecommunication Network & Data Center Systems
- IEEE 802.3ba
- LAN & WAN
- 100BASE-FX, 10GBASE-LX4, 10GBASE-ER/EW, 40GBASE-LR4, 100GBASE-ER4 etc.

#### ➤ Part Number

Part Number	Description
LS-FDF-MC2U-EP8M-O	Fiber Distribution Frame, 2RU, Empty Closure Body, 8 entry holes for MCM cassette or adaptor panel, Fixed type (LS-FDF-2U-EP-O + 2pcs LS-FDP-BK-4M)

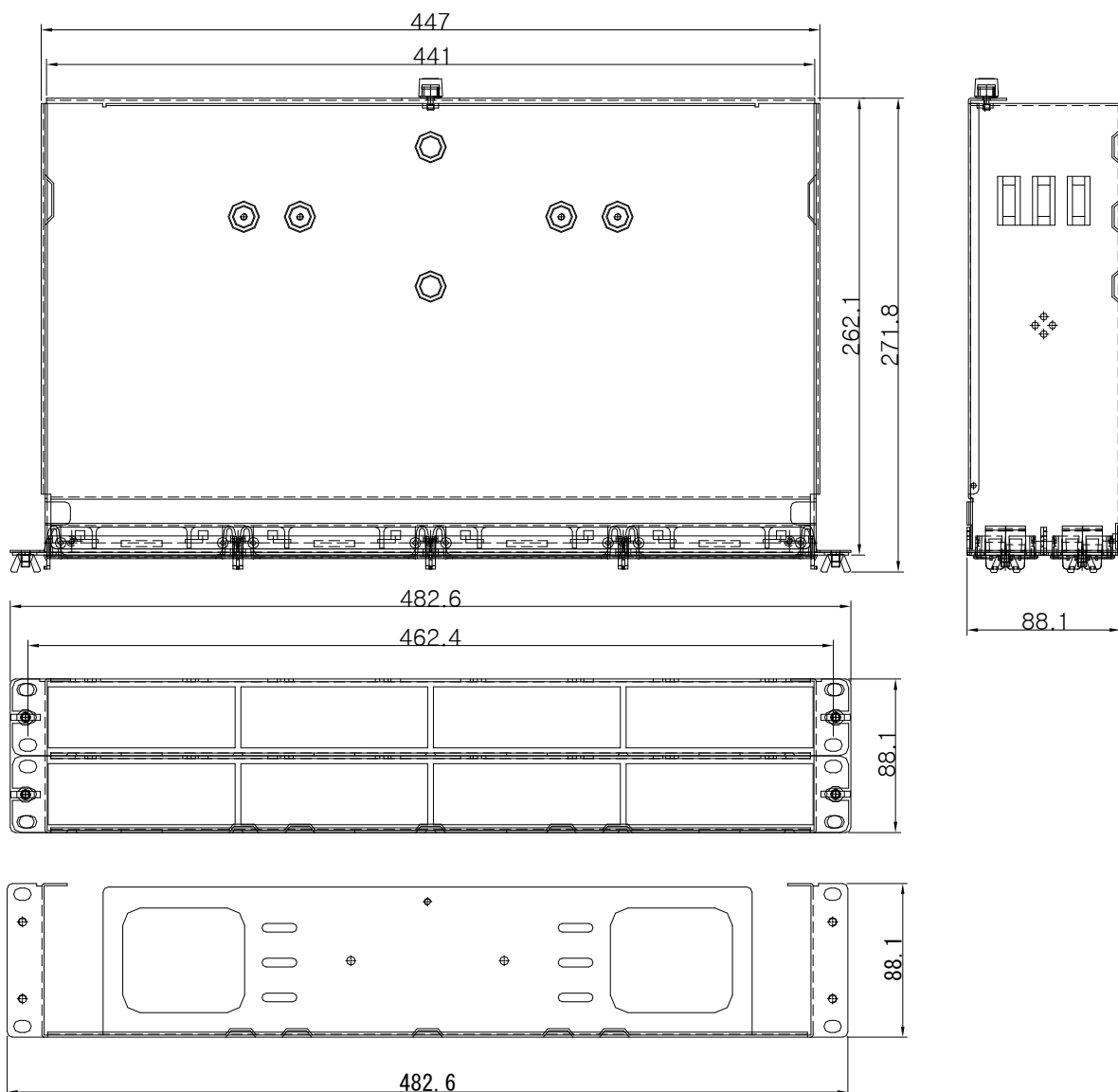
DS CODE:  
3100

## LS Simple™ Fast-Net™ Solution

### Fiber Pre-terminated Solution (MPO/MTP solution)

- MPO/MTP Modular 2U Empty Panel (8 Cassette in 2RU, Fixed)

➤ Drawing

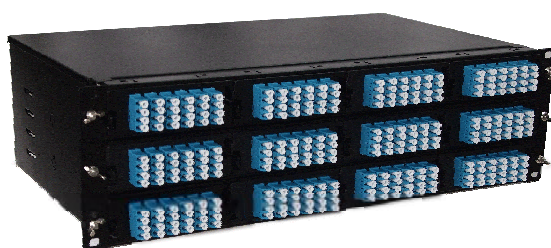


DS CODE:  
3100

## LS Simple™ Fast-Net™ Solution

### Fiber Pre-terminated Solution (MPO/MTP solution)

**- MPO/MTP Modular 3U Empty Panel (12 Cassette in 3RU, Fixed)**



LS-FDF-MC3U-EP12M-O + 12 pcs LS-MCM-LC-4M-24-SM

#### ➤ Description

- Fiber distribution closure installed for MPO/MTP cassette modules and adaptor panels
- Included the metallic case, cable protective guide, cable management and others
- Installed on the international standard (ETSI 19") equipment rack or cabinet rack

#### ➤ Specification

- Dimension : 482.6 x 271.8 x 131.8 (mm)
- Capacity up to max. LC 432-core
- 12 spaces for MPO/MTP cassette or MPO/MTP adaptor panel
- 19" Rack mountable 3RU
- Operating temperature : 0 °C ~70 °C

#### ➤ Application

- Telecommunication Network & Data Center Systems
- IEEE 802.3ba
- LAN & WAN
- 100BASE-FX, 10GBASE-LX4, 10GBASE-ER/EW, 40GBASE-LR4, 100GBASE-ER4 etc.

#### ➤ Part Number

Part Number	Description
LS-FDF-MC3U-EP12M-O	Fiber Distribution Frame, 3RU, Empty Closure Body, 12 entry holes for MCM cassette or adaptor panel, Fixed type (LS-FDF-3U-EP-O + 3pcs LS-FDP-BK-4M)

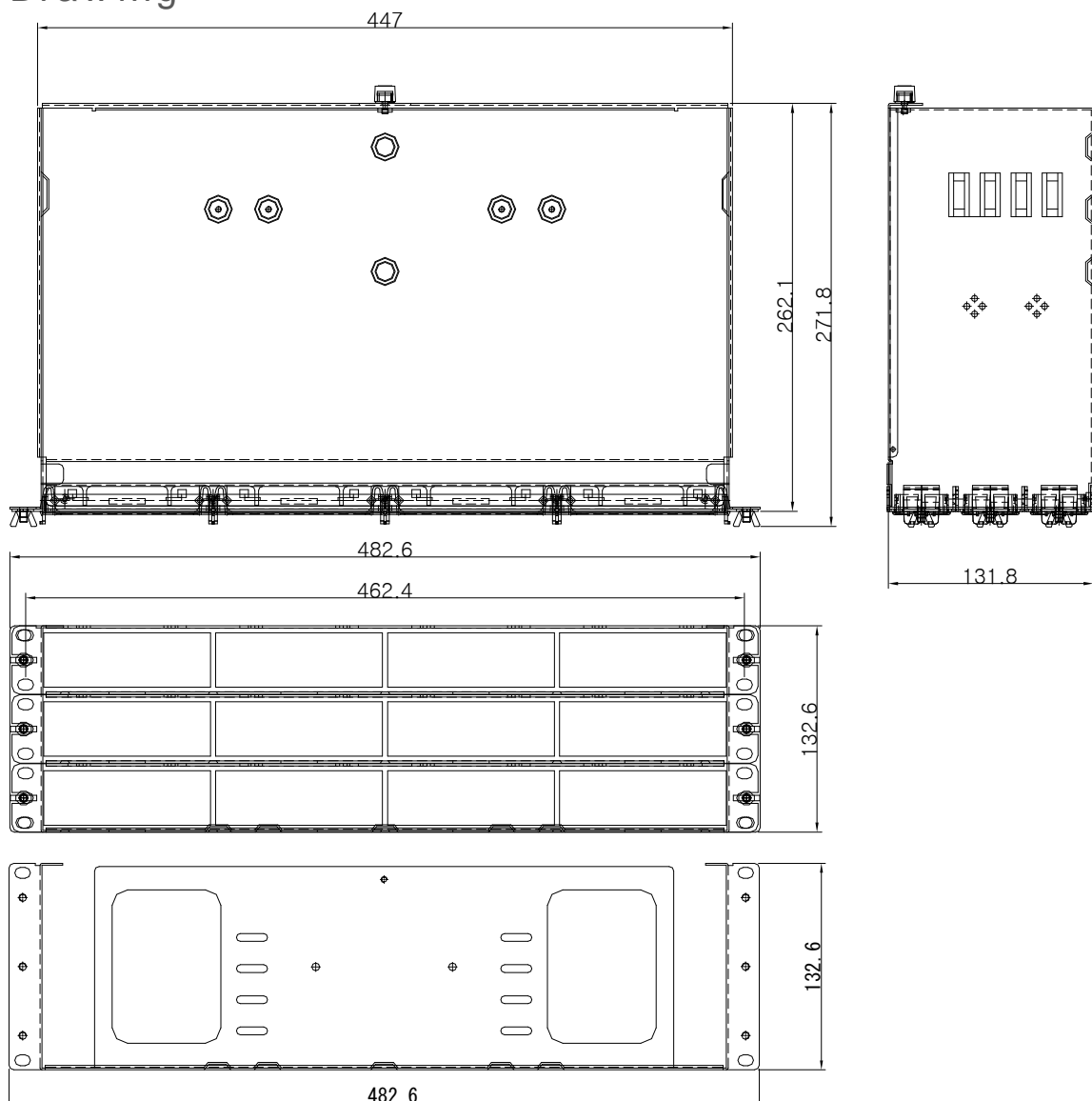
DS CODE:  
3100

## LS Simple™ Fast-Net™ Solution

### Fiber Pre-terminated Solution (MPO/MTP solution)

- MPO/MTP Modular 3U Empty Panel (12 Cassette in 3RU, Fixed)

➤ Drawing



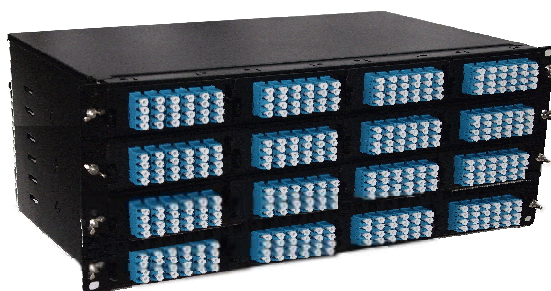


DS CODE:  
3100

## LS Simple™ Fast-Net™ Solution

### Fiber Pre-terminated Solution (MPO/MTP solution)

**- MPO/MTP Modular 4U Empty Panel (16 Cassette in 4RU, Fixed)**



LS-FDF-MC3U-EP12M-O + 16 pcs LS-MCM-LC-4M-24-5M

#### ➤ Description

- Fiber distribution closure installed for MPO/MTP cassette modules and adaptor panels
- Included the metallic case, cable protective guide, cable management and others
- Installed on the international standard (ETSI 19") equipment rack or cabinet rack

#### ➤ Specification

- Dimension : 482.6 x 271.8 x 177 (mm)
- Capacity up to max. LC 576-core
- 16 spaces for MPO/MTP cassette or MPO/MTP adaptor panel
- 19" Rack mountable 4RU
- Operating temperature : 0°C ~70°C

#### ➤ Application

- Telecommunication Network & Data Center Systems
- IEEE 802.3ba
- LAN & WAN
- 100BASE-FX, 10GBASE-LX4, 10GBASE-ER/EW, 40GBASE-LR4, 100GBASE-ER4 etc.

#### ➤ Part Number

Part Number	Description
LS-FDF-MC4U-EP16M-O	Fiber Distribution Frame, 4RU, Empty Closure Body, 16 entry holes for MCM cassette or adaptor panel, Fixed type (LS-FDF-4U-EP-O + 4pcs LS-FDP-BK-4M)

DS CODE:  
3100

## LS Simple™ Fast-Net™ Solution

### Fiber Pre-terminated Solution (MPO/MTP solution)

- MPO/MTP Modular 4U Empty Panel (16 Cassette in 4RU, Fixed)

➤ Drawing

