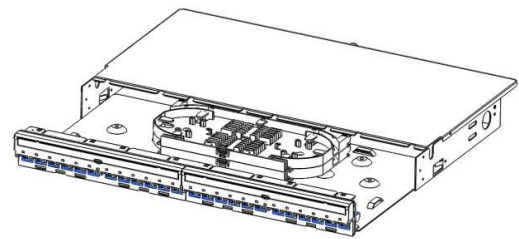
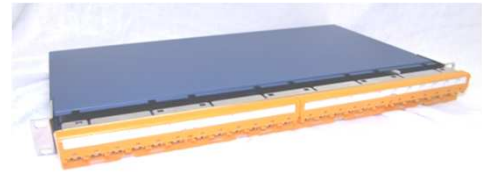


DS CODE:
800801

LS Simple™ Cabling Solution

LS-IFDC-LC-xx-C-048-DP-D



➤ Description

SimpleWin™ Intelligent Fiber Distribution Frame is used to connect between intelligent FDFs for Cross-connection system.

- Mounted on 19" standard rack 1U
- Support LC type duplex 48core
- Support Single-mode & multi-mode (OM3, OM4)
- Panel material SPCC 1T or 1,2T
- usable with RJ45 Modular Jack
- Factory completed product with 100% outgoing inspection
- RoHS compliant, supporting splicing fiber cable arrangement
- Support LED having a variety of color (exact monitoring & work order)
- Cross-connection system

➤ Application

- Telecommunication network
- Data Center System
- LAN and WAN (1000 BASE-T, 10G BASE-SR,
- 40G BASE-SR4/10, 1Gbps, 10Gbps, 40Gbps FX)

➤ Part Numbers

Part Numbers	Description
IFDC-LC-SM-C-048-DP-D	Intelligent Fiber Distribution Frame, LC Duplex, For Single-mode, 48Core, Drawer type, 19" Rack mount(1U)
IFDC-LC-MM-C-048-DP-D	Intelligent Fiber Distribution Frame, LC Duplex, For Multi-mode, 48Core, Drawer type, 19" Rack mount(1U)
IFDC-LC-M3-C-048-DP-D	Intelligent Fiber Distribution Frame, LC Duplex, For OM3, 48Core, Drawer type, 19" Rack mount(1U)
IFDC-LC-M4-C-048-DP-D	Intelligent Fiber Distribution Frame, LC Duplex, For OM4, 48Core, Drawer type, 19" Rack mount(1U)

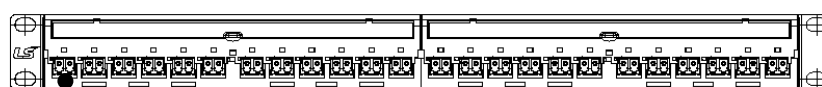
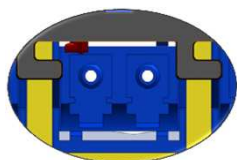
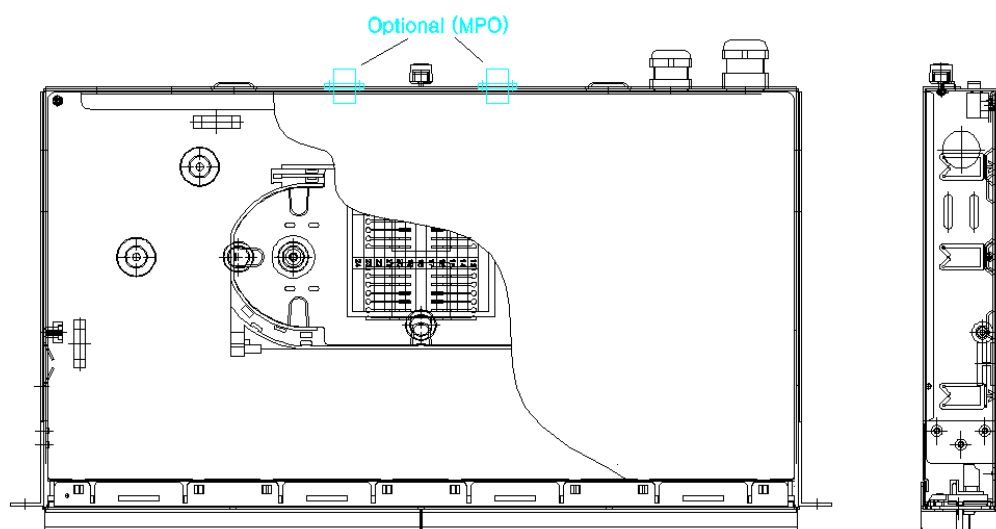
DS CODE:
800801

LS Simple™ Cabling Solution

The drawing appearing on this page is not a warranty,
and may be subject to change or modification without any prior notice.

LS-IFDC-LC-xx-C-048-DP-D

Drawing



For SM: LC duplex Blue recommended
For MM, OM3, OM4: Beige recommended

- Gland spec. for cable holding

Part Numbers	Suitable cable diameter [mm]	Outer size [mm]	
		A	B
LS-GLAND-D13.5	6 ~12	24.0	19.9
LS-GLAND-D16	10 ~ 14	27.0	22.0